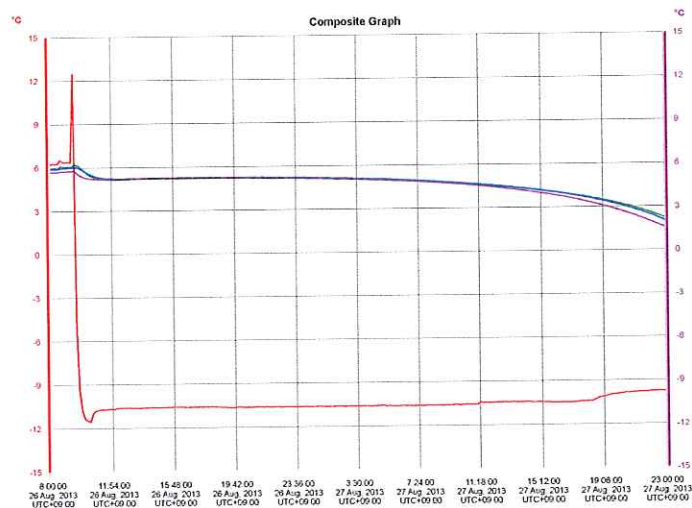
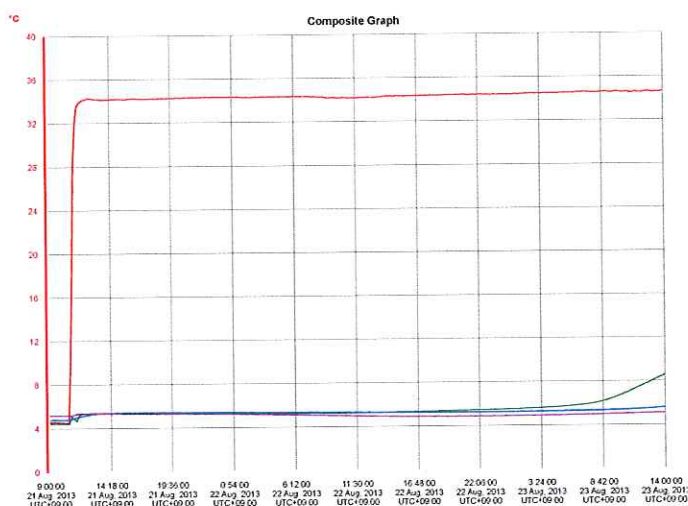


TD150

48 hours maintained 2°C ~ 8°C

External Dimension	360 x 360 x 415mm
Available Payload Dimension	150 x 150 x 150mm, 3.3L
Cooling Elements Quantity	13
Weight	8.0Kg



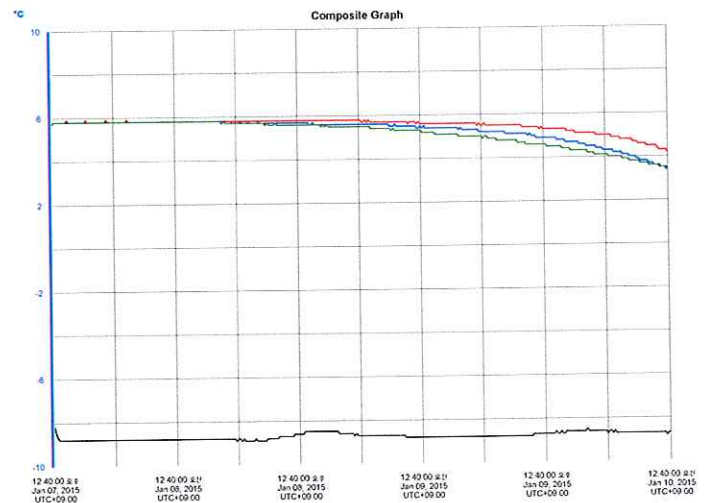
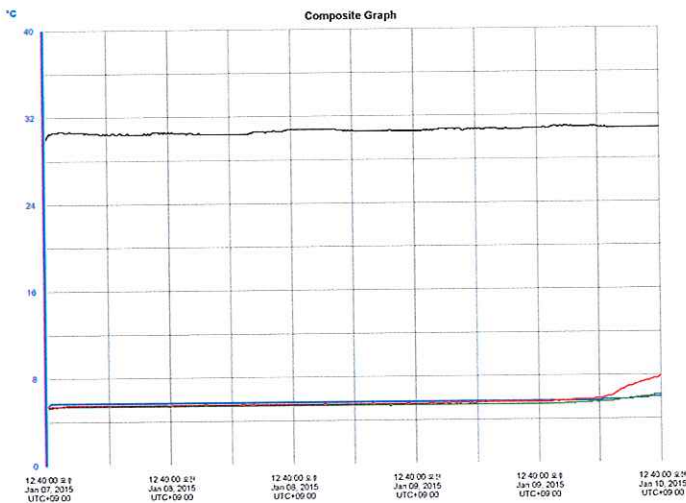
48 hours
maintained
2°C ~ 8°C



TD200

60 hours maintained 2°C ~ 8°C

External Dimension	440 x 440 x 485mm
Available Payload Dimension	200 x 200 x 200mm, 8.0L
Cooling Elements Quantity	12
Weight	9.0Kg



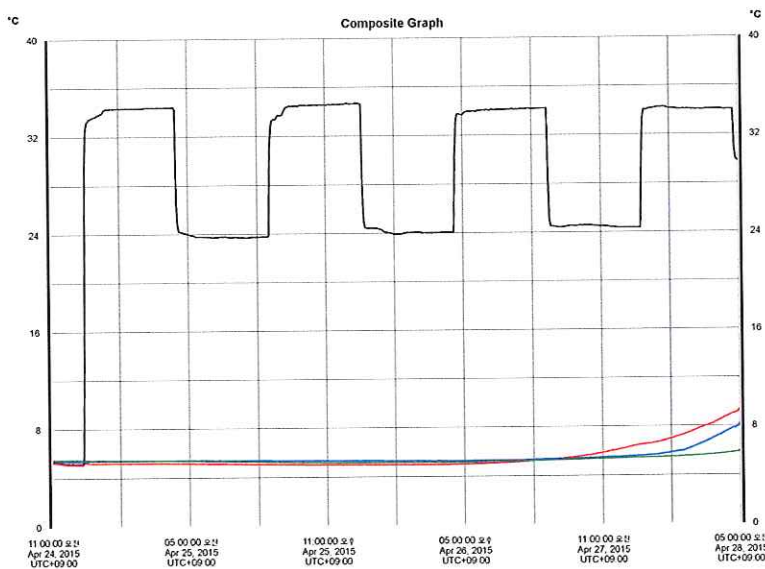
**60 hours
maintained
2°C ~ 8°C**



TD200

80 hours maintained 2°C ~ 8°C

External Dimension	440 x 440 x 485mm
Available Payload Dimension	200 x 200 x 200mm, 8.0L
Cooling Elements Quantity	12
Weight	10.0Kg



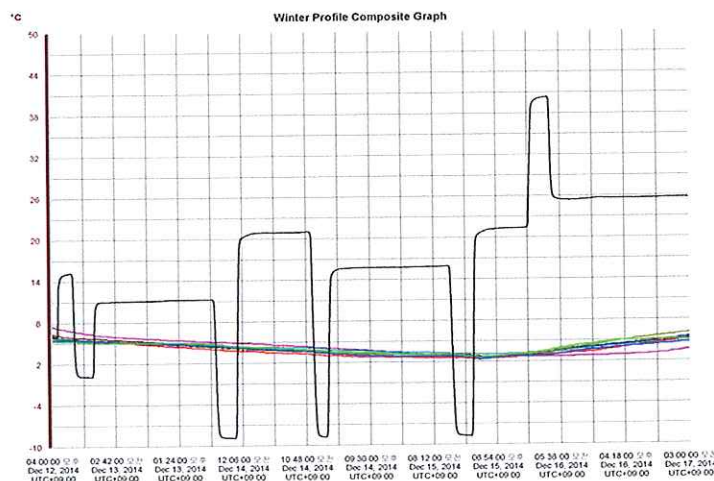
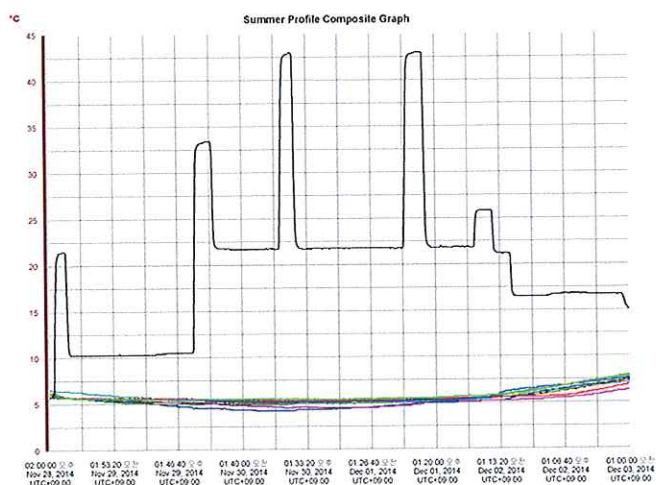
80 hours
maintained
2°C ~ 8°C



TD380.1

100 hours maintained 2°C ~ 8°C

External Dimension	570 x 530 x 485mm
Available Payload Dimension	340 x 300 x 290mm, 29.5L
Cooling Elements Quantity	12
Weight	15.0Kg



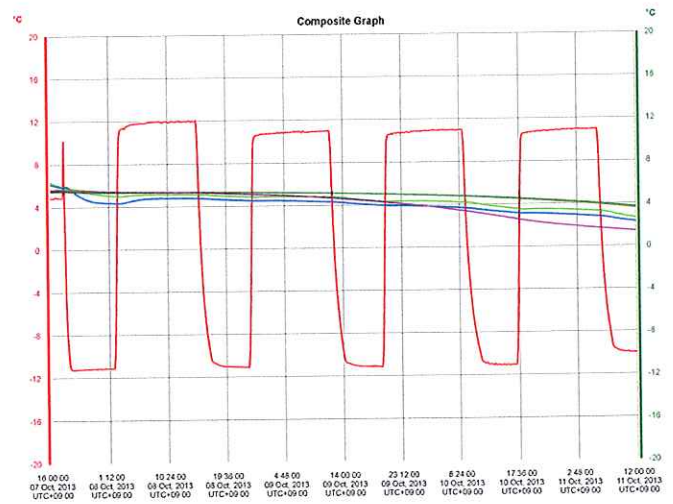
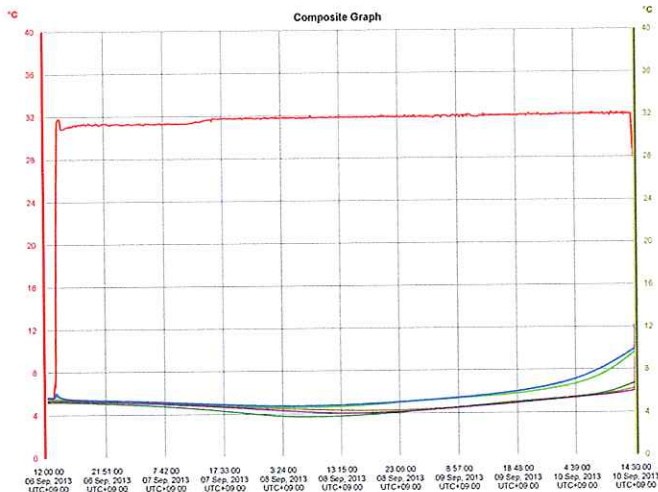
100 hours
maintained
2°C ~ 8°C



TD550

72 hours maintained 2°C ~ 8°C

External Dimension	764 x 590 x 515mm
Available Payload Dimension	510 x 340 x 260mm, 45L
Cooling Elements Quantity	14
Weight	25.0Kg



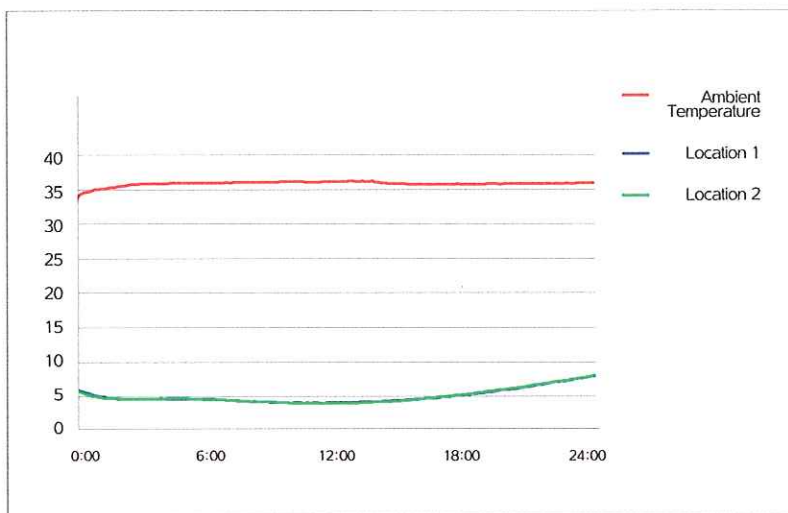
72 hours
maintained
2°C ~ 8°C



TE220

24 hours maintained 2°C ~ 8°C at 35°C (95°F)

External Dimension	300 x 300 x 400mm
Available Payload Dimension	180 x 120 x 190mm, 4.1L
Cooling Elements Quantity	10
Weight	6.5Kg



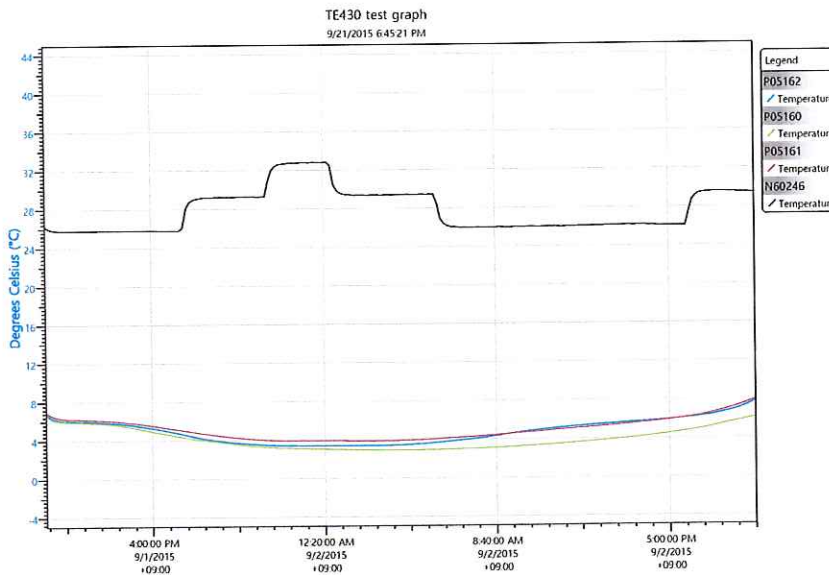
24 hours
maintained
2°C ~ 8°C at
35°C (95°F)



TE430

34 hours maintained 2°C ~ 8°C

External Dimension	510 x 295 x 395mm
Available Payload Dimension	380 x 170 x 220mm, 14.2L
Cooling Elements Quantity	14
Weight	8.5Kg



34 hours
maintained
2°C ~ 8°C

